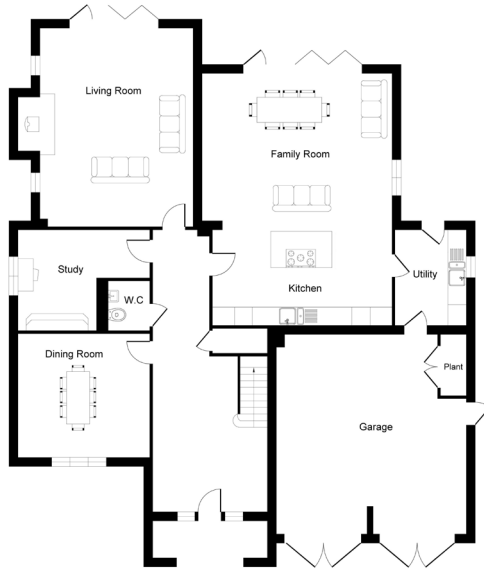
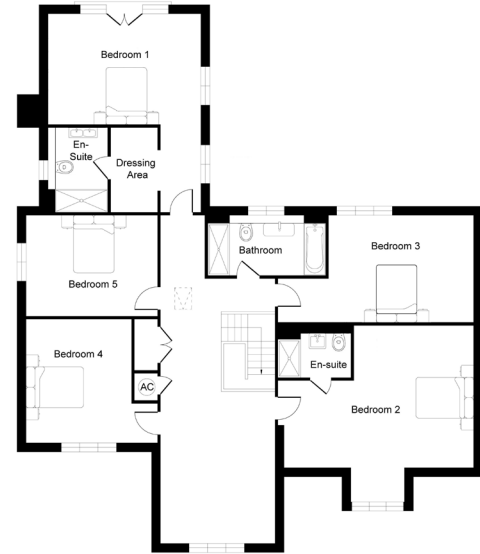


# Plot 6, plots 2, 3 & 8 handed



Ground Floor



First Floor

## GROUND FLOOR

Living room	6375 x 4865mm	20' 9" x 15' 10"
Family/Kitchen	8128 x 6125mm max	26' 8" x 20' 0" max
Study	3250 min x 2537 mm max	10' 7" max x 8' 3"
Dining room	4237 x 3990 mm	13' 9" x 13' 1"

## FIRST FLOOR

Bedroom 1	4865 max x 3555mm max	15' 10" max x 11' 7" max
Bedroom 2	6010 max x 4595mm EVC Dormer	19' 7" max x 15' 1"
Bedroom 3	4700 min x 3435mm max	15' 4" min x 11' 3" max
Bedroom 4	3950 max x 3387mm min	12' 10" max x 11' 11" min
Bedroom 5	4287 x 3251mm	14' 1" x 10' 7"