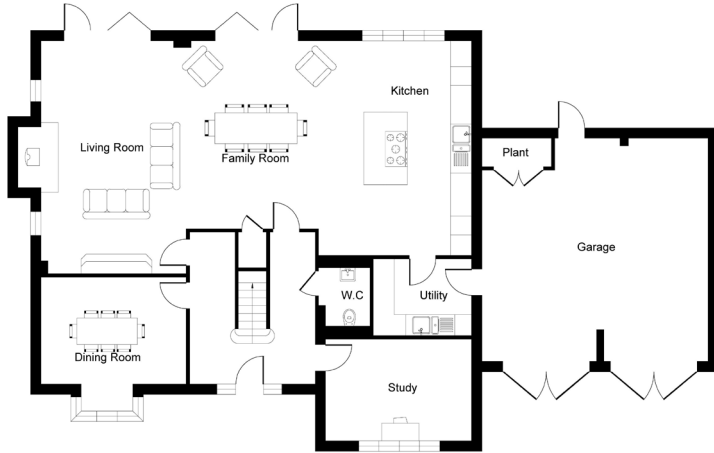
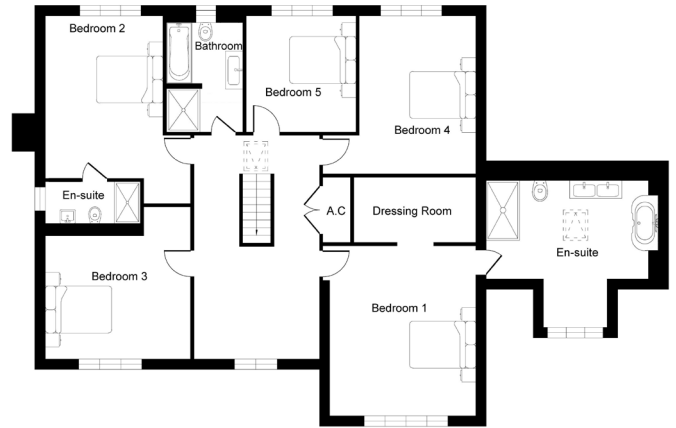


Plots 4 & 10, plot 1 handed



Ground Floor



First Floor

GROUND FLOOR

Living/Family/Kitchen	12280 x 6956mm	40' 3" x 22' 10"
Dining room	4100 x 3050mm	13' 5" x 10' 0"
Study	4077 x 2875mm	13' 4" x 9' 4"

FIRST FLOOR

Bedroom 1	4810 x 4077mm	15' 8" x 13' 4"
Bedroom 2	4625 x 3360mm min	15' 2" x 11' 0" min
Bedroom 3	4110 x 3501mm min	13' 5" x 11' 5" min
Bedroom 4	4516 x 3360mm min	14' 8" x 11' 0" min
Bedroom 5	3310 x 3002mm	10' 9" x 9' 8"